



Forget me not

TWINSAYER

AWAY FROM HOME

A FRESH APPROACH TO WORKPLACE SOLUTIONS

JOIN OUR GREEN CHOICE JOURNEY



WWW.TWINSAYER.CO.ZA/AFH



Looking for a high quality service partner that offers flexible workplace hygiene, and care solutions to meet your changing needs? **Partner with Twinsaver Away From Home (AFH)**, a leader in our industry.

At Twinsaver, innovation and clients' needs are core to our business. With over 40 years' experience in the industry, we understand what is important to you and to your customers.

A FRESH APPROACH TO WORKPLACE SOLUTIONS

With our fresh new look, we're taking a fresh approach to how we manage hygiene and care in the workplace. Here's what you can look forward to from the **Twinsaver AFH team**:

We will spend more time gaining a deep understanding of your business:

- What drives your success and what is important to you?
- Who is your end customer/client and what is important to them?
- ✓ Bring fresh insight - share market, category & product expertise;
- ✓ Introduce agile and innovative solutions, tailored to your unique business needs; and
- ✓ Develop a personalised, collaborative and responsive partnership that will add value and build your success.

For more information on our Commercial, Choice or Care Range, please contact the Away From Home Team on 0860 777 111 or email: info@twinsaver.co.za
www.twinsaver.co.za/afh

COMMERCIAL

QUALITY BRANDED SOLUTIONS AND GREAT VALUE. YOU CAN HAVE IT ALL.

Maintaining impeccable premises at the right price is essential for our commercial clients. Our extensive range of high quality solutions are tailored to suit your individual requirements and budget. At Twinsaver, our national footprint ensures products and solutions are delivered efficiently and consistently.

Twinsaver supplies it all. Strong, thick, and super absorbent paper towels are available in 1 Ply or 2 Ply ranges. Environmentally friendly premium blend facial tissues as well as paper and non-woven wipes are available to choose from. For your convenience, soft and strong 1 Ply or 2 Ply toilet tissue is packaged in large, or standard dispenser roll assortments.

CHOICE

YOU DON'T GET A SECOND CHANCE TO MAKE A FIRST IMPRESSION.

In the hospitality, catering and cleaning business, we understand that your image is key to who you are.

Our luxury 2 Ply toilet tissue rolls and facial tissues are made with a blend of premium fibres, using processes that are as kind to the environment as they are to the skin, and our range of wipes and paper towels are strong, thick and super absorbent.

Partner with Twinsaver to enhance your brand's image and leave a lasting, positive impression on your clients.

CARE

IS THE HYGIENE OF YOUR STAFF AND PATIENTS A TOP PRIORITY?

In the healthcare business, cleanliness is a priority. At Twinsaver, we offer quality hygiene and care solutions. Our tailor-made solutions ensure the sustained quality of cleanliness and hygiene - keeping your employees and patients safe.

Twinsaver offers an extensive range of paper and hand wash dispensers. Strong, thick, and super absorbent paper towels for medical use are available in 2 Ply. Our soft and strong 1 Ply or 2 Ply toilet tissue is packaged in large, or standard dispenser roll assortments, ideal for health care establishments. Partner with Twinsaver for an extensive range to suit your needs.

JOIN THE FAMILY. PARTNER WITH TWINSAYER.



GREEN CHOICE Products are born when

QUALITY MEETS SUSTAINABILITY

We're all aware of the importance of saving paper, and most of us try to do our bit when it comes to reducing, reusing, and recycling, but that's a bit tricky when it comes to toilet paper! It's probably the only paper material we can legitimately get away with only using once.

**TWINSAYER IS THE BIGGEST,
HIGH-QUALITY RECYCLED FIBRE (RF) TISSUE
MANUFACTURER IN SOUTH AFRICA.**

We manufacture environmentally sustainable Recycled Fibre (RF) products from post-consumer paper that is reworked into new tissue paper. The manufacturing process is energy and water efficient. Twinsaver Recycled Fibre (RF) products are good for the environment because they save waste paper from occupying landfill, are eco-friendly, 100% biodegradable and conserves natural resources. In addition, Twinsaver Green Choice offers quality Recycled Fibre (RF) products without compromising softness.

The **Green Choice Range** by Twinsaver aims to help you meet growing concerns for the environment with sound, **eco-friendly** and **cost-effective product choices** that deliver on the quality and performance you expect.

PARTNER WITH US AND MAKE A SIGNIFICANT CONTRIBUTION TO THE ENVIRONMENT.



BIGGEST RECYCLED FIBRE MANUFACTURER AND BRAND

Twinsaver is the largest tissue manufacturer and the largest user of Recycled paper fibre in Southern Africa. We use only fibre that's recyclable in our Green Choice range.



JOB CREATION

A lot of material used in our Recycled fibre range is collected through informal recycling collectors, providing sustainable incomes to communities in need, while extending the lifespan of landfills.



WATER WISE AND ENERGY EFFICIENT

Targets are set to reduce the usage of electricity and water across all our manufacturing sites, which we continuously strive to achieve.



SUSTAINABILITY

Our tissue and soap products are 100% biodegradable.
Our toilet tissue is septic tank safe.



RESPONSIBLE WASTE MANAGEMENT

The by-product from our 100% Recycled paper manufacturing process is disposed of in an environmentally friendly manner, i.e. it is used in the manufacture of bricks, as opposed to being sent to landfill sites.



RECYCLABLE PACKAGING

We use recyclable poly packaging across the Twinsaver range to integrate our product usage with our clients' recycling initiatives.



The **GREEN CHOICE RANGE** by Twinsaver aims to help you meet growing concerns for the environment with sound, **ECO-FRIENDLY** and **COST-EFFECTIVE PRODUCT** choices that deliver on the quality and performance you expect.

By using Twinsaver Recycled Fibre (RF) products in our everyday life, we can help conserve our natural resources and build a sustainable future.

**LITTLE BY LITTLE OUR CHOICES
MAKE A BIG DIFFERENCE.**

For more information on our **Green Choice Offering**, please contact the Away From Home Team on 0860 777 111 or email: info@twinsaver.co.za
www.twinsaver.co.za/afh

INDEX

TOILET TISSUE 1 PLY 06

- 0174 1 Ply Toilet Tissue
- 0624 1 Ply Toilet Tissue Jumbo Roll
- 0171 1 Ply Toilet Tissue Econo
- 1379 1 Ply Mini's

TOILET TISSUE 2 PLY 07

- 1364 2 Ply Toilet Tissue
- 1320 2 Ply Classic Fresh Toilet Tissue
- 1371 2 Ply Classic Fresh Mini's

HAND TOWELS 08

- 3022 2 Ply Laminate Hand Towel
- 0391 1 Ply Hand Towel
- 0337 2 Ply M-fold Laminate Hand Towel
- 0315 1 Ply Interfold Hand Towel
- 0319 1 Ply C-fold Hand Towel

CENTREFEED TOWELS 09

- 0324 1 Ply Mini Centrefeed Hand Towel
- 0325 1 Ply Centrefeed Towel

MEDICAL TOWELS 09

- 0383 2 Ply Small Medical Towel
- 0384 2 Ply Large Medical Towel

ROLLER TOWELS 09

- 3012 2 Ply Roller Towel
- 3020 2 Ply Mighty Big Roller Towel

PAPER WIPES 10

- 0480 2 Ply Paper Wipe
- 0474 1 Ply Paper Wipe
- 0482 1 Ply Paper Wipe Slim Line
- 0481 1 Ply Paper Wipe Mini

NON-WOVEN WIPES 10

- 0981 Blue Roll Non-woven Wipe
- 0937 Non-woven Wipe White Sheet
- 0938 Non-woven Wipe Blue Sheet

FACIAL TISSUE 11

- 2030 2 Ply White Box 90's
- 2032 2 Ply Softpack 90's
- 2016 2 Ply White Box 180's
- 2015 2 Ply Rainbow Box 180's
- 2044 3 Ply Mens Pocket Pack
- 2045 3 Ply Ladies Pocket Pack
- 2042 3 Ply Facial Tissue Cube Vitamin E 60's
- 2043 3 Ply Facial Tissue Cube Camomile 60's
- 2040 2 Ply Decorative Tube 80's
- 2001 3 Ply Mens Tissue Box

WET WIPES 13

- 43034 Disinfecta Wet Wipes 10's
- 43035 Disinfecta Wet Wipes 40's
- 43044 Refresha Wet Wipes 10's
- 43046 Refresha Wet Wipes 40's

CATERING SERVIETTES 15

- 0425 2 Ply Serviettes
- 0414 1 Ply Serviettes (1000)
- 7257 1 Ply Serviettes (3000)

PAPER PLATES 16

- 3007004700 Paper Plates Bulk (180mm)
- 3007001202 Paper Plates 50's (230mm)
- 3007001201 Deep Pan Paper Plates 50's (230mm)

ALUMINIUM FOIL 16

- 5023A Heavy Aluminium Foil
- 3001005009 Light Catering Aluminium Foil

AWAY FROM HOME PRODUCT ICONS 17

A TRUSTED PARTNER OF CHOICE 18



TOILET TISSUE 1 PLY

JOIN OUR GREEN CHOICE JOURNEY.
www.twinsaver.co.za/afh



1 PLY TOILET TISSUE

0174

- Green Choice
- 100% Recycled Fibre
- Soft, strong and great quality
- SABS approved
- Septic tank safe
- 48 Rolls of 500 sheets per case
- Sheet size: 100mm x 110mm



1 PLY TOILET TISSUE JUMBO ROLL

0624

- Green Choice
- 100% Recycled Fibre
- Ideal for high traffic environment
- Strong, great quality
- 8 Rolls per case
- Roll Size: 95mm X 550m



1 PLY TOILET TISSUE ECONO

0171

- Green Choice
- 100% Recycled Fibre
- Cost effective
- Septic tank safe
- 48 Rolls of 500 sheets per case
- Sheet size: 100mm x 110mm



1 PLY MINI'S

1379

- Green Choice
- 100% Recycled Fibre
- 8 Rolls of 300 sheets per case
- Sheet size: 100mm x 110 mm



For more information on our 1 Ply Toilet Tissue Range, please contact the Away From Home Team on 0860 777 111 or email: info@twinsaver.co.za | www.twinsaver.co.za

SA's #1 Toilet Tissue brand!*

*As voted in the 2022 Daily Sun Readers Choice survey for the TOILET PAPER CATEGORY.



TOILET TISSUE 2 PLY

JOIN OUR GREEN CHOICE JOURNEY.
www.twinsaver.co.za/afh



2 PLY TOILET TISSUE

1364

- Softness: 3D embossing that is soft to the touch
- 100% Virgin Fibre
- Individually wrapped for hygiene
- 24 Rolls of 350 sheets per case
- Sheet size: 100mm X 110mm



1st in South Africa!

- ✓ A product that is visually different
- ✓ 1st to market technology
- ✓ Improved softness and strength

Softness:

3D embossing that is soft to the touch.

Strength:

Through newly acquired refining technology.



2 PLY CLASSIC FRESH TOILET TISSUE

1320

- Softness: 3D embossing that is soft to the touch
- 100% Virgin Fibre
- Wrapped in 4s for hygiene
- 12 Packs of 4 with 350 sheets per case
- Sheet size: 100mm X 110mm



2 PLY CLASSIC FRESH MINI'S

1371

- Softness: 3D embossing that is soft to the touch
- 100% Virgin Fibre
- 9 Rolls of 200 sheets per case
- Sheet size: 100mm X 110mm



For more information on our 2 Ply Toilet Tissue Range, please contact the Away From Home Team on 0860 777 111 or email: info@twinsaver.co.za | www.twinsaver.co.za

SA's #1 Toilet Tissue brand!

*As voted in the 2022 Daily Sun Readers Choice survey for the TOILET PAPER CATEGORY.



HAND TOWELS

JOIN OUR **GREEN CHOICE** JOURNEY.
www.twinsaver.co.za/afh



2 PLY LAMINATE HAND TOWEL

3022

- 100% Virgin Fibre
- Luxurious laminated soft towel
- Ideal for automated dispensers
- Controlled sheet dispensing, reduces waste
- 6 Rolls per case
- Roll size: 200mm X 125m



1 PLY HAND TOWEL

0391

- Green Choice
- 100% Recycled Fibre
- Super strong, super absorbent
- Controlled sheet dispensing, reduces waste
- Cost effective
- 6 Rolls per case
- Roll size: 200mm X 150m



2 PLY M-FOLD LAMINATE HAND TOWEL

0337

- Green Choice
- Super strong, super absorbent
- Interfold ensures reduced consumption and waste
- 20 Packs of 100 per case (2 000 sheets per case)
- Sheet size: 240mm X 325mm



1 PLY INTERFOLD HAND TOWEL

0315

- 100% Virgin Fibre
- Single sheet dispensing, reduces waste
- Cost effective quality and absorbency
- 20 Packs of 120 per case (2 400 sheets per case)
- Sheet size: 240mm X 335mm



1 PLY C-FOLD HAND TOWEL

0319

- 100% Virgin Fibre
- Controlled sheet dispensing, reduces waste
- Cost effective quality and absorbency
- 20 Packs of 100 per case (2 000 sheets per case)
- Sheet size: 240mm X 330mm



For more information on our Towel Ranges, please contact the Away From Home Team on 0860 777 111 or email: info@twinsaver.co.za | www.twinsaver.co.za

CENTREFEED, MEDICAL AND ROLLER TOWELS

1 PLY MINI CENTREFEED HAND TOWEL

- Green Choice
- 100% Recycled Fibre
- Super strong, super absorbent
- Unrestricted usage
- 6 Rolls per case
- Roll size: 210mm X 140m

0324



2 PLY MEDICAL TOWEL

- 100% Virgin Fibre
- Embossing for improved absorbency
- Superior 2 ply
- Each roll is perforated for ease of use
- 18 Rolls per case
- Sheet size: 254mm X 440m

0383



2 PLY ROLLER TOWEL

- Green Choice
- Super strong, super absorbent
- 50 Sheets per roll
- 12 Packs of 2 per case
- Sheet size: 260mm x 220mm

3012



1 PLY CENTREFEED TOWEL

- Green Choice
- 100% Recycled Fibre
- Super strong, super absorbent
- Unrestricted usage
- 4 Rolls per case
- Roll size: 240mm X 360m

0325



2 PLY MEDICAL TOWEL

- 100% Virgin Fibre
- Embossing for improved absorbency
- Superior 2 ply
- Each roll is perforated for ease of use
- 9 Rolls per case
- Sheet Size: 508mm X 440m

0384



2 PLY MIGHTY BIG ROLLER TOWEL

- Green Choice
- Super strong, super absorbent
- 150 Sheets per roll
- 12 Packs of 2 per case
- Sheet size: 260mm x 220mm

3020



SA's #1 Toilet Tissue brand!

*As voted in the 2022/2023 Ask Afrika Icon Brands survey for the PAPER KITCHEN TOWEL CATEGORY.



PAPER WIPES

2 PLY PAPER WIPE

0480

- Super strong, super absorbent
- Multi-purpose wiping
- 2 ply softness
- 1 Roll per pack
- Roll size: 280mm X 1000m



1 PLY PAPER WIPE

0474

- Green Choice
- 100% Recycled Fibre
- Multi-purpose wiping
- 1 Roll per pack
- Roll size: 210mm X 1500m



1 PLY PAPER WIPE SLIM LINE

0482

- Green Choice
- 100% Recycled Fibre
- Multi-purpose wiping
- 1 Roll per pack
- Roll size: 160mm X 1500m



1 PLY PAPER WIPE MINI

0481

- Green Choice
- 100% Recycled Fibre
- Multi-purpose wiping
- 1 Roll per pack
- Roll size: 200mm X 750m



NON-WOVEN WIPES

BLUE ROLL NON-WOVEN WIPE

0981

- Made from soft and highly absorbent spunlace
- Super strong, super absorbent
- Single or daily use wipes for frequent use
- Can be used wet or dry
- 1 Roll per pack
- Roll size: 250mm X 400m

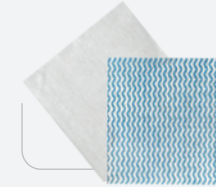


NON-WOVEN WIPE SHEETS

0937

0938

- Made from highly absorbent spunlace
- Soft, super strong, super absorbent
- Single or daily use wipes for high risk and frequently contaminated areas
- Can be used wet or dry
- Available in Blue & White of the HACCP* colours
- 50 Wipes per pack
- 5 Packs per case
- Sheet size: 35 x 40 cm



*Hazard Analysis and Critical Control Points – For high risk and frequently contaminated areas to reduce the risk of safety hazards in catering, cleaning and hygiene.



FACIAL TISSUE

2 PLY WHITE BOX 90'S

- 100% Virgin Fibre
- Soft, strong, great quality
- FSC certified
- 90 Tissues per box
- 40 Units per case
- Sheet size: 205mm x 190mm

2030



2 PLY SOFTPACK 90'S

- 100% Virgin Fibre
- Soft, Strong, great quality
- 90 Tissues per sleeve
- 40 Units per case
- Sheet size: 205mm X 190mm

2032



2 PLY WHITE BOX 180'S

- 100% Virgin Fibre
- Soft, strong, great quality
- FSC certified
- 180 Tissues per box
- 40 Units per case
- Sheet size: 205mm x 190mm

2016



2 PLY RAINBOW BOX 180'S

- 100% Virgin Fibre
- Soft, strong, great quality
- FSC certified
- 180 Tissues per box
- 40 Units per case
- Sheet size: 205mm x 190mm

2015



3 PLY MENS POCKET PACK

- 100% Virgin Fibre
- Ideal fit for shirt/ jacket pocket
- FSC certified
- 10 Tissues per pocket pack
- 24 x 8 Packs per case
- Sheet size: 210mm x 210mm

2044



3 PLY LADIES POCKET PACK

- 100% Virgin Fibre
- Ideal for handbags/school bag
- FSC certified
- 10 Tissues per pocket pack
- 24 x 8 Packs per case
- Sheet size: 210mm x 210mm

2045



For more information on our Facial Tissue Range, please contact the Away From Home Team on 0860 777 111 or email: info@twinsaver.co.za | www.twinsaver.co.za

FACIAL TISSUE

3 PLY FACIAL TISSUE CUBE VITAMIN E 60'S

2042

- 100% Virgin Fibre
- Extra soft, infused with soothing vitamin E
- FSC certified
- 60 Tissues per box
- 18 Units per case



2 PLY DECORATIVE TUBE 80'S

2040

- 100% Virgin Fibre
- Perfect for desk and car
- FSC certified
- 80 Tissues per tube
- 24 Units per case
- Sheet size: 164mm x 190mm



3 PLY FACIAL TISSUE CUBE CAMOMILE 60'S

2043

- 100% Virgin Fibre
- Extra soft, infused with camomile
- FSC certified
- 60 Tissues per box
- 18 Units per case



3 PLY MENS TISSUE BOX

2001

- 100% Virgin Fibre
- Soft, strong, great quality
- 36 Tissues per box
- Sheet size: 370mm x 350mm



SA's #1 Toilet Tissue brand!*

*As voted in the 2022/2023 Ask Afrika Icon Brands survey for the **MEN AND WOMAN FACIAL TISSUE CATEGORY**.



WET WIPES

JOIN OUR **GREEN CHOICE** JOURNEY.
www.twinsaver.co.za/afh



DISINFECTA WET WIPES 10'S

43034

- Soft and gentle on skin
- Kills 99.9% of germs
- Antibacterial protection for the whole family
- 32 packs of 10 per case
- Sheet size: 200mm x 170mm



DISINFECTA WET WIPES 40'S

43035

- Soft and gentle on skin
- Kills 99.9% of germs
- Antibacterial protection for the whole family
- 20 packs of 40 per case
- Sheet size: 200mm x 170mm



REFRESHA WET WIPES 10'S

43044

- Soft and gentle on skin
- Alcohol Free
- Hypo-allergenic
- Dermatologically tested
- Contains soothing Aloe and Camomile
- 32 packs of 10 per case
- Sheet size: 200mm x 170mm



REFRESHA WET WIPES 40'S

43046

- Soft and gentle on skin
- Alcohol Free
- Hypo-allergenic
- Dermatologically tested
- Contains soothing Aloe and Camomile
- 20 packs of 40 per case
- Sheet size: 200mm x 170mm



The image features three vegetable crostini arranged on a light grey, textured surface. Each crostini is made of a slice of toasted bread, topped with a layer of white cream cheese. The toppings include sliced red and yellow cherry tomatoes, thin slices of red onion, and fresh green microgreens. A single, whole, dark red cherry tomato is placed on each crostini. A small sprig of microgreens is also scattered on the surface between the crostini. In the bottom right corner, a whole red tomato is visible. The overall composition is clean and appetizing.

TWINSAYER CATERING RANGE

CATERING SERVIETTES

JOIN OUR GREEN CHOICE JOURNEY.
www.twinsaver.co.za/afh



2 PLY SERVIETTES

0425



2 PLY
1000
SERVIETTES

- 100% Virgin Fibre
- Bulk pack
- Strong and soft
- 2 ply luxurious serviettes
- 1000 Sheets per case
- Sheet size: 330mm X 330mm



1 PLY SERVIETTES

0414



TWINSAYER
0414
1 PLY
SERVIETTES
1000 X 290 X 300
100% RECYCLED FIBRE

- Green Choice
- 100% Recycled Fibre
- Bulk pack
- Strong and soft
- 1000 Sheets per case
- Sheet size: 290mm X 300mm



1 PLY SERVIETTES

7257



TWINSAYER
7257
1 PLY
SERVIETTES
3000 X 200 X 290
100% RECYCLED FIBRE

- Green Choice
- 100% Recycled Fibre
- Bulk pack
- Strong and soft
- 3000 Sheets per case
- Sheet size: 200mm X 290mm



For more information on our Serviettes Range, please contact the Away From Home Team on 0860 777 111 or email: info@twinsaver.co.za | www.twinsaver.co.za

PAPER PLATES

SMALL PAPER PLATES BULK (180mm)

3007004700

- Ideal for serving light snacks and dishes
- Bulk pack - cost effective
- Pack size: 1 X 1000 Plates



PAPER PLATES 50'S (230mm)

3007001202

- Superior oil and water resistance for holding all types of meals
- Packed in 50's for convenience of use
- Bulk pack - cost effective
- Pack size: 50 X 20 (1000 plates)



DEEP PAN PAPER PLATES 50'S (230mm)

3007001201

- Superior oil and water resistance for holding all types of meals
- Packed in 50's for convenience of use
- Bulk pack - cost effective
- Pack size: 50 X 20 (1000 plates)



ALUMINIUM FOIL

HEAVY ALUMINIUM FOIL

5023A

- 70m long foil for high volume environments
- Strong, great quality
- Roll size: 70m X 440mm wide
- Pack size: 6 X 70m

- Ideal for:
- Roasting food
 - Keeping food fresh
 - Keeping frozen food free of freezer burn
 - Keeping food warm and ready to serve

Not suitable for use in microwave



LIGHT CATERING ALUMINIUM FOIL

3001005009

- 70m long foil for high volume environment
- Great Quality
- Roll size: 70m X 440mm wide
- Pack size: 6 X 70m

- Ideal for:
- Keeping food warm and ready to serve
 - Keeping frozen food free of freezer burn
 - Keeping food fresh

Not suitable for microwave or oven baking/cooking



AWAY FROM HOME PRODUCT ICONS



100% Recycled Fibre used in manufacturing process.



Thicker, stronger and soft comforting feel.



Individually wrapped for better hygiene.



3 in 1 benefits: Soft, Strong and Great Quality.



All purpose wiping for light and heavy spills.



Enables you to use as much as you need.



3D embossing that is soft to the touch.



Perforated enables you to control how much is used.



Dermatologically approved product.



New embossed pattern for better absorption and strength.



Embossed pattern for better absorption and strength.



Thicker and stronger 2PLY for super absorbency.



Quality and regulatory approved product.



Recycled material.



Recyclable low-density polyethylene.



Dermatologically tested for extra care.



Kills 99.9% of germs.



Anti-Bacterial protection for your family.



Dermatologically tested alcohol free wipes.



Hypo-allergenic wipes.



BIODEGRADABLE

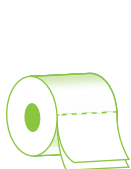
Biodegradable: Environmentally friendly product.



G Cide 99.9% effective germ protection: Environmentally-friendly product: Anti-microbial, Anti-viral, Anti-fungal disinfection with the power to kill germs.



Eco Choice: Environmentally friendly product. Contains no harmful additives or components.



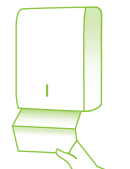
Toilet Roll



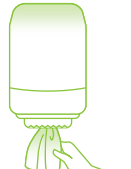
Toilet Tissue



Hand Towel



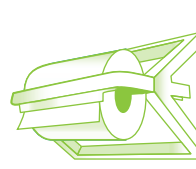
Interfold Towel



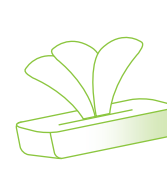
Centrefeed Towel



Paper Wipe



Wall-mount



Facial Tissues



Facial Tissues



Roller Towel



The mark of responsible forestry

For more information on our Twinsaver Product Range, please contact the Away From Home Team on 0860 777 111 or email: info@twinsaver.co.za

A TRUSTED PARTNER OF CHOICE

The Twinsaver range includes toilet and facial tissues, hand towels, wipes, non-woven wipes, roller towel and medical towels. We also have a full complement of dispenser solutions and soaps, as well as catering, cooking and baking disposables. Our Adult Care portfolio is specifically catered to address the ever growing needs of Adult Incontinence in South Africa.

SCALE AND EXPERTISE

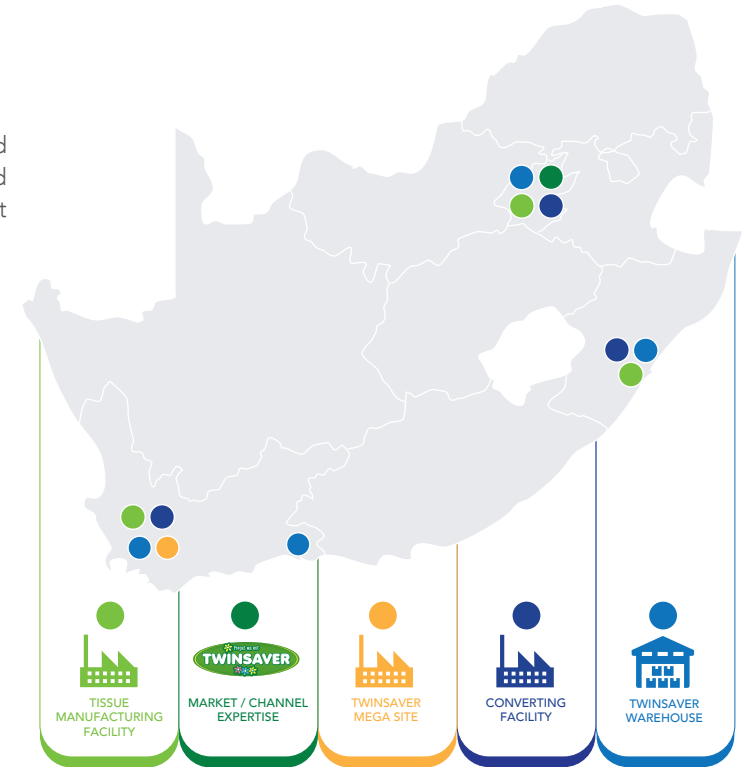
- ✓ Largest local tissue manufacturer in SA
- ✓ National manufacturing and distribution footprint
- ✓ We service clients directly, anywhere in SA
- ✓ We produce VF and RF products across our portfolio
- ✓ Affordable and premium offerings across our product range

TRUSTED BRAND AND REPUTATION

- ✓ A track record of over 4 decades
- ✓ Consistent, trusted quality products
- ✓ Voted SA's favourite toilet tissue paper brand

SUPERIOR PRODUCT QUALITY

- ✓ SABS, ISO and FSC certified products
- ✓ An end-to-end manufacturer, in control of the sourcing, manufacture and converting process
- ✓ If products are not to spec, customer may return stock for a full refund (T&Cs apply)



SA's #1 Toilet Tissue, Facial Tissue & Roller Towel brand!



*As voted in the 2022 Daily Sun Readers Choice for Toilet Paper category.

*As voted in 2022/2023 Ask Africa Icon Brands survey for Facial Tissues Men & Woman and Paper Kitchen Towel categories.

Twinsaver is the biggest, high-quality Recycled Fibre (RF) tissue manufacturer in South Africa.

Partner with us and make a significant contribution to the environment.



TWINSAYER GROUP

REGIONAL CONTACT DETAILS:

GAUTENG:

Building 3, Bryanston Gate
Office Park, 170 Curzon
Road, Bryanston,
Johannesburg
011 799 7111

KWAZULU NATAL:

4 Cornubia Wave Office
Park, 21 Crassula Road,
Cornubia, Durban
031 913 9500

WESTERN & EASTERN CAPE:

Cnr Mill and Marvello Road,
Bellville South,
Cape Town
021 959 5111



A FRESH APPROACH TO WORKPLACE SOLUTIONS

WWW.TWINSAYER.CO.ZA